

# OIL FIRED CONDENSING BOILERS



# TURCO CONDENSING BOILER



## WELCOME TO TURCO OIL FIRED BOILERS...

**You can be assured of a quality made & high performing boiler with local back-up and support.**

Turco is a privately owned company which has been established for 40 years. During this time it has built a reputation as one of the leading UK Manufacturers in Heating Products.

From our new cutting edge 40,000 sq. ft. production facility, we offer reliability, versatility and the peace of mind you would expect from a company at the forefront of technology.

Turco Engineering are able to provide a cost effective solution to suit any household application be it external, white cased or boiler house. With exceptional heating and hot water performance the customer will enjoy the financial benefits of a Turco condensing boiler time and time again.

ISO accreditation guarantees quality and professionalism across our business, from the products we manufacture to the service we deliver.

All Turco boilers must be commissioned by an Engineer approved by Turco and Boiler Passports must be filled out and returned to fulfil warranty requirements.

Turco Engineering Ltd have a continued research and development programme which occasionally necessitates changes to specifications herein.

Copyright of the contents of this brochure is secured by Turco Engineering Ltd and therefore no part of it may be reproduced without permission.

For further information on all TURCO products please contact:  
Turco Engineering Ltd  
14 Tullylagan Road, Cookstown, Co. Tyrone, BT80 9AZ  
Tel: 028 8676 3372 Fax: 028 8676 3484  
E-mail: [info@turco.co.uk](mailto:info@turco.co.uk)



### WHAT IS IT & HOW DOES IT WORK?

The principle behind a Turco condensing boiler is to increase efficiency by maintaining heat for as long as possible within the heat exchangers. This is done with an additional, high efficiency, stainless steel condensing heat exchanger which is positioned on top of the boiler. The Turco design team have incorporated turbulator baffles within the heat exchanger which slow flue gases down resulting in maximum energy transfer across the boiler.

On other traditional boilers, flue gases can exit at a high temperature (200°C - 260°C) and are composed of many different gases. With a Turco condensing boiler the flue gases can be as low as 60 – 80°C. This low flue gas temperature is key to maximising ongoing boiler efficiency.

### WHY TURCO?

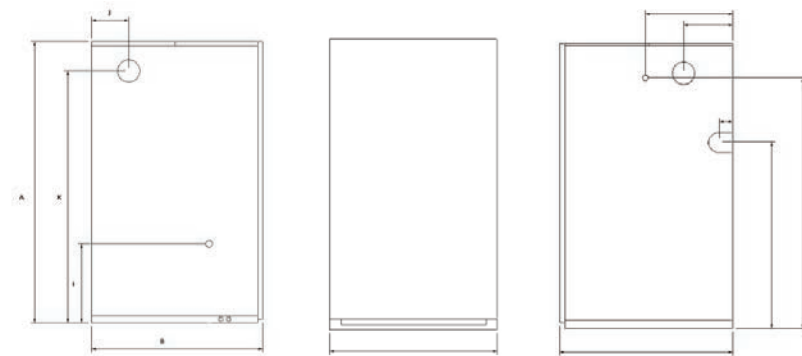
- One of the most efficient oil boilers on the market.
- 5 Year Warranty \*T&C's apply.
- Locally manufactured and supported.
- Wide output range available.
- Ambassador (white cased model) and Countryman (external model) are prewired for ease of installation.
- Boilers are fitted with a Bentone BF1 Burner which is quiet, reliable and has a proven track record.
- Burner spares are readily available and great value for money.
- The Turco Plume Management Kit can be fitted to direct plume away from buildings, paths, boundary fences etc.
- Ambassador boilers are finished in stylish white cases and designed to fit under work tops (15kW-38kW).
- Countryman Outdoor models are fitted with long lasting green plastic coated steel cases and multidirectional flues.
- The Turco Condenser is manufactured from 316 stainless steel with a push on door seal.
- Available in outputs from 15kW (50,000 BTU) to 50kW (170,000 BTU).
- Turco manufacture to ISO 9001:2008 guaranteeing quality.
- Turco have a highly trained service department who will deal with all calls promptly.

AMBASSADOR KITCHEN

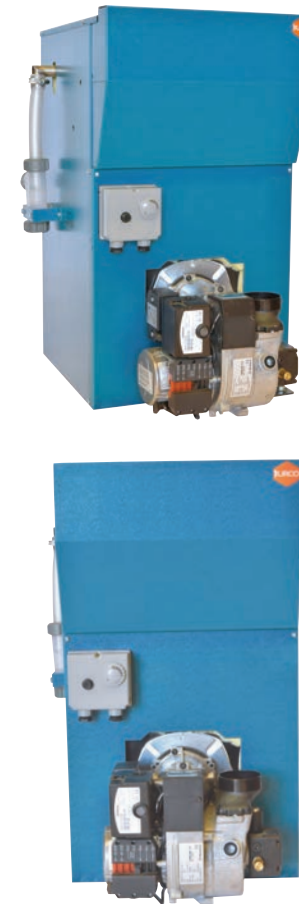


Dimensions	15/21 kW	21/27 kW	27/33 kW	27/38 kW	35/50 kW
A	854	854	854	854	995
B	589	589	589	589	657
C	421	481	481	481	581
D	140	140	140	140	115
E	496	528	528	528	628
F	706	706	706	706	889
G	35	35	35	35	35
H	355	355	355	355	370
I	293	293	293	293	293
J	423	423	423	423	491
K	741	741	741	741	889

Dimensions are in (mm)

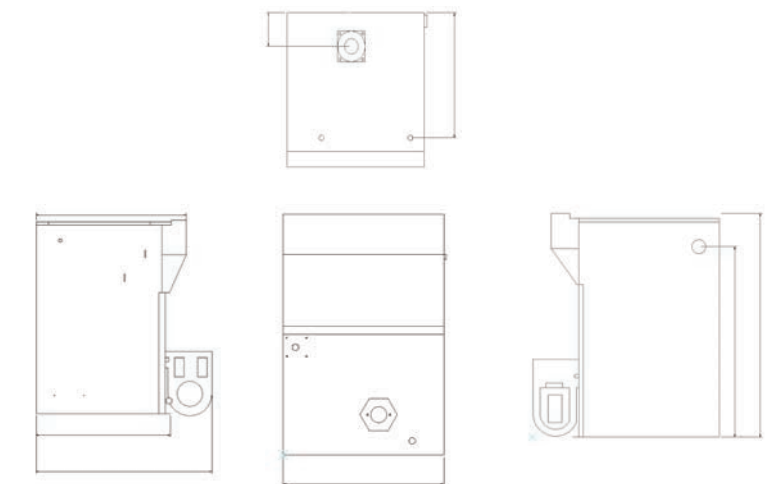


CONSUL BOILER HOUSE



Dimensions	15/21 kW	27/27 kW	27/33 kW	27/38 kW	35/50 kW
A	436	440	440	440	491
B	402	402	402	402	491
C	568	568	568	568	617
D	385	453	453	453	555
E	559	527	527	527	627
F	694	694	694	694	825
G	138	142	142	142	116
H	352	357	357	357	372

Dimensions are in (mm)

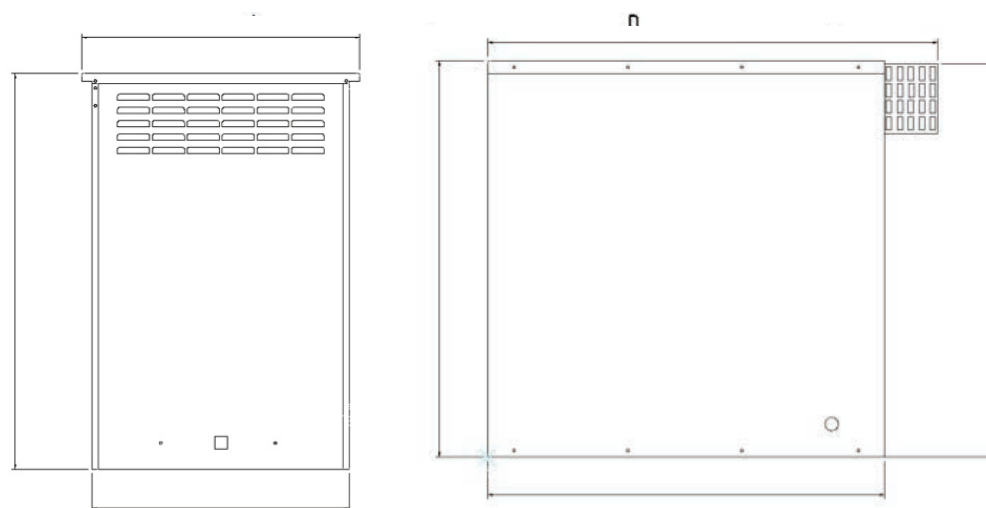


COUNTRYMAN SLIMLINE OUTDOOR



Dimensions	15/21 kW	21/27 kW	27/33 kW	27/38 kW
A	521	521	521	521
B	868	868	868	868
C	750	750	750	750
D	894	894	894	894
E	864	864	864	864
F	485	485	485	485

Dimensions are in (mm)

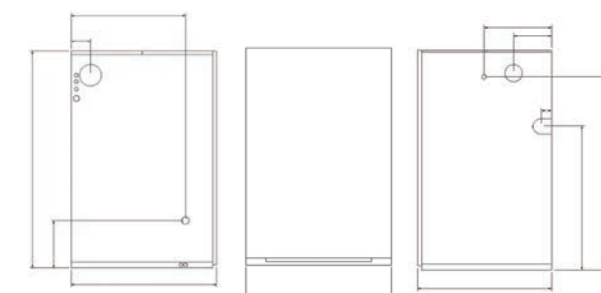


SENATOR CONDENSING COMBI



Dimensions	15/21 kW	21/27 kW	27/38 kW
A	741	741	741
B	293	293	293
C	140	140	140
D	423	423	423
E	589	589	589
F	641	641	641
G	589	589	589
H	528	528	528
I	577	577	577
J	614	614	614
K	645	645	645
L	670	670	670
M	705	705	705
N	854	854	854
O	140	140	140
P	24	240	240

Dimensions are in (mm)





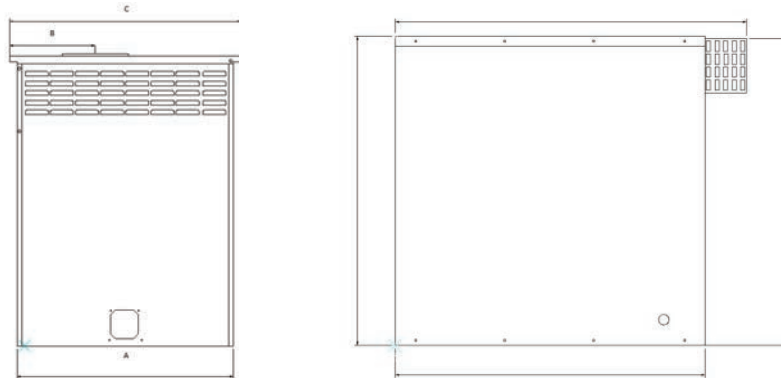
## CONDENSING RANGE



### COUNTRYMAN OUTDOOR COMBI

Dimensions	15/21 kW	21/27 kW	27/38 kW
A	645	645	645
B	260	260	260
C	681	681	681
D	868	868	868
E	684	684	684
F	880	880	880
G	827	827	827

Dimensions are in (mm)



## MULTI DIRECTIONAL FLUE SYSTEMS

To ensure optimum performance low running noises, Turco complement their extensive boiler range with a multi-directional flue system which is push fit and round for ease of install.

### Turco Flue Kit Range:

Product Name	Description	What's included?	What Output?
Flue Kit 1-3	80mm diameter low level balanced flue kit for wall thickness 150mm – 500mm	1 x Telescopic Flue 1 x Snorkel Pipe 2 x Jubilee Clips Cork Gasket/ Seals & Lubricant	15kW – 38kW
Flue Kit 1-4	100mm diameter low level balanced flue kit for wall thickness 150mm – 500mm	1 x Telescopic Flue 1 x Snorkel Pipe 2 x Jubilee Clips Cork Gasket/ Seals & Lubricant	35kW – 50kW
Flue Kit 3-3	300mm (80mm diameter) extension piece. Can be added to kits 1, 4 & 5	300mm extension	15kW – 38kW
Flue Kit 3-4	300mm (100mm diameter) extension piece. Can be added to kits 1, 4 & 5	300mm extension	35kW – 50kW
Flue Kit 4-3	High level extension upright to extend the flue 2m from floor (80mm diameter/ horizontal flue terminates at high level)	1 x High Level Flue 1 x Snorkel Pipe 2 x Jubilee Clips 1 x Stainless Steel Flashing 1 x White Steel Flashing Cork Gasket/ Seals & Lubricant	15kW – 38kW

### Turco Flue Kit Range:

Product Name	Description	What's included?	What Output?
Flue Kit 4-4	High level extension upright to extend the flue 2m from floor (100mm diameter/ horizontal flue terminates at high level)	1 x High Level Flue 1 x Snorkel Pipe 2 x Jubilee Clips 1 x Stainless Steel Flashing 1 x White Steel Flashing Cork Gasket/ Seals & Lubricant	35kW – 50kW
Flue Kit 5-3	Vertical balanced flue kits for ceiling heights 2.36m – 2.59m (80mm diameter/ vertical termination)	1 x High Level Vertical Flue 1 x Snorkel Pipe 2 x Jubilee Clips 1 x Stainless Steel Flashing 2 x White Steel Flashing Cork Gasket/ Seals & Lubricant 2 x Wall Support Brackets 1 x Roof Flashing	15kW – 38kW
Flue Kit 5-4	Vertical balanced flue kits for ceiling heights 2.36m – 2.59m (100mm diameter/ vertical termination)	1 x High Level Vertical Flue 1 x Snorkel Pipe 2 x Jubilee Clips 1 x Stainless Steel Flashing 2 x White Steel Flashing Cork Gasket/ Seals & Lubricant 2 x Wall Support Brackets 1 x Roof Flashing	35kW – 50kW
Flue Kit 6-3	950mm (80mm diameter) extension piece. Can be added to kits 1, 4 & 5	950mm extension	15kW – 38kW
Flue Kit 6-4	950mm (100mm diameter) extension piece. Can be added to kits 1, 4 & 5	950mm extension	35kW – 50kW
Flue Kit 8-3	45 degree bend (80mm diameter)	45 degree bend	15kW – 38kW
Flue Kit 8-4	45 degree bend (100mm diameter)	45 degree bend	35kW – 50kW
Plume Kit	Flue kit for re-directing boiler plume (80 mm diameter)	90 Degree Bend 500mm Extension Piece 1000mm Extension Piece 90 Degree End Piece Wall Support Bracket	15kW – 38kW
Additional Items if Required		Cork Gasket & Starter Piece 45 Degree Bend 300mm Extension Piece Balanced Flue Adapter Straight End Piece	
Flexible Flue		6m of 100mm dia Flexi Flue 9m of 100mm dia Flexi Flue	

### GENERAL DATA

Electrical Supply: 240w-50hz  
 Fuel: 28 Second  
 Maximum Control Thermostat Setting 85°C  
 Maximum Operating Pressure:  
 3 Bar - 45psi - 28m static head room 92ft  
 Draught Limit: Min 12.5Nm<sup>2</sup> - 0.05" WG  
 Max 33.0Nm<sup>2</sup> - 0.12" WG  
 Oil Supply Connection ¼" BSP  
 High Limit Stat: Manual Reset

Band	SEDBUK range
A	90% and above
B	86% - 90%
C	82% - 86%
D	78% - 82%
E	74% - 78%
F	70% - 74%
G	below 70%

## HOW EFFICIENT IS YOUR TURCO?

Energy Efficiency Bands – As a simple guide to efficiency, a scheme has been created with SEDBUK efficiency bands assigned to boilers on an 'A' to 'G' scale. The band is shown in the database and may be used on product literature and labels. All TURCO boilers are Sedbuk Band A and up to 93% efficient.

# WHY TURCO?

- Outputs from 15 – 50kW
- Internal, External and Boiler House Models
- Up to 93% Gross SAP2009 Annual Efficiency (SEDBUK)
- Front access for ease of siting, service and maintenance
- Proven, reliable, efficient & quiet burner
- Multi directional push fit, round, telescopic flue
- Designed and manufactured locally by Turco
- 5 year warranty \*T&C's apply

# BIOMASS

- Outputs from 15 – 250kW
- High efficiency
- Wood chip and wood pellet boilers
- Fully modulating
- Automated de-ash system

# OTHER ENGINEERING SERVICES

TURCO are industry leaders in a range of engineering services. With a highly trained and skilled workforce coupled with state of the art machinery we can offer a wide range of fabrication services for the sub-contract market.

Our design team can take the client through the complete process; from drawing to costing to manufacture. In this way we can prototype, prove and produce to the highest specifications.

For further information please call 028 8676 3372.



14 Tullylagan Road,  
Sandholes, Cookstown,  
BT80 9AZ

**T:** 028 8676 3372

**F:** 028 8676 3484

**E:** [info@turco.co.uk](mailto:info@turco.co.uk)

